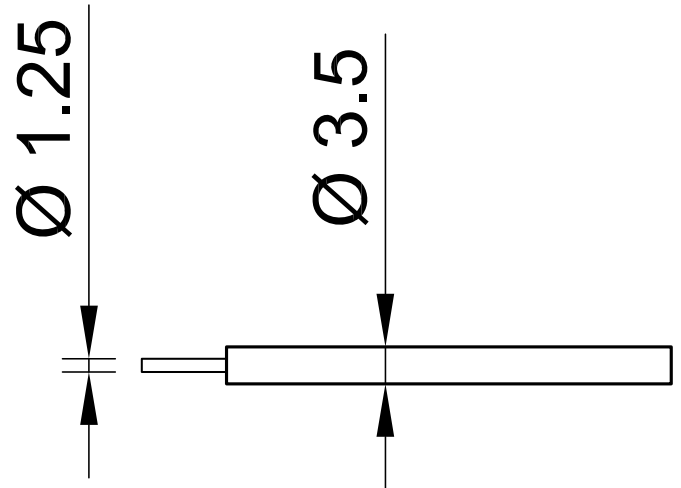


# SILI-2V 0,75



Item number 61.7663-\*

Super flexible stranded wire 0,75 mm<sup>2</sup> with reinforced, double-layer insulation for the highest safety.

| Technical data           |                                   |
|--------------------------|-----------------------------------|
| Rated Values             | AC 1000 V, 15 A / DC 1500 V, 15 A |
| Standard color(s) *      | 21 22 23 27 28                    |
| Lead insulation          | SIL                               |
| Temperature range        | -50 °C ... +90 °C                 |
| Strand design (n x Ø mm) | 385 x 0,05                        |
| Lead weight              | 17.0 kg/km                        |
| Conductor diameter       | 1.25 mm                           |
| Cable diameter           | 3.5 mm                            |
| Insulation thickness     | 1.1 mm                            |
| Approvals                | UR, CE, UKCA, EAC                 |