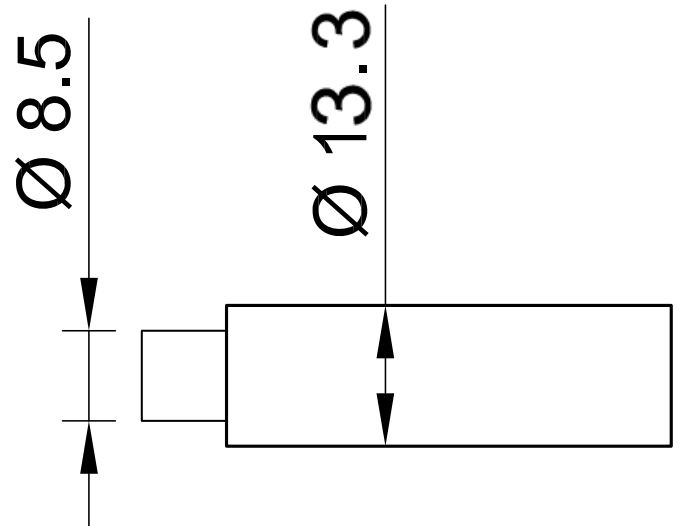
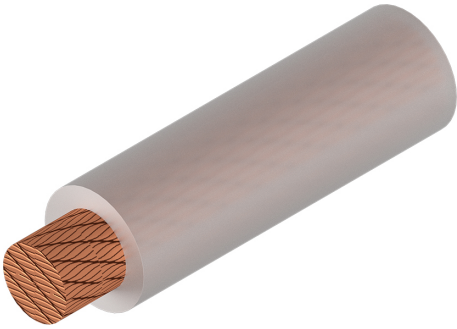


SILI-S 35



Item number 61.7616-*

Highly flexible stranded wire 35 mm² with reinforced insulation.

Technical data	
Rated Values	AC 1000 V, 160 A / DC 1500 V, 160 A
Standard color(s) *	33
Lead insulation	SIL
Temperature range	-50 °C ... +90 °C
Strand design (n x Ø mm)	9324 x 0,07
Lead weight	440.0 kg/km
Conductor diameter	8.5 mm
Cable diameter	13.3 mm
Insulation thickness	2.4 mm
Approvals	UR, CE, UKCA, EAC