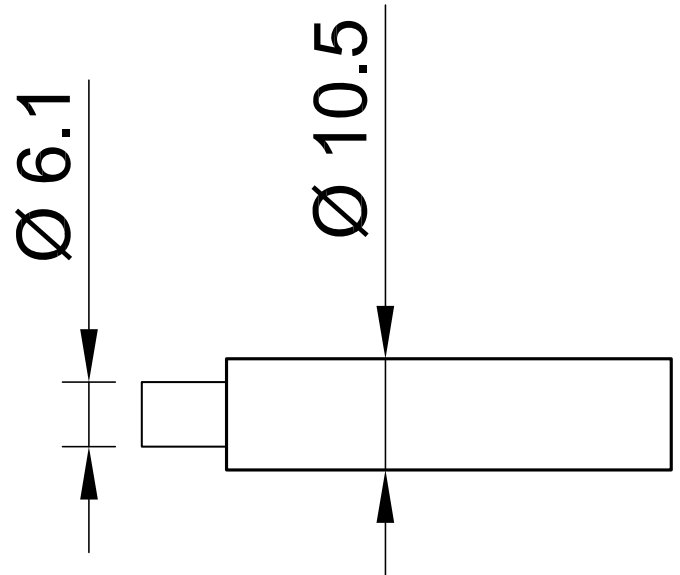
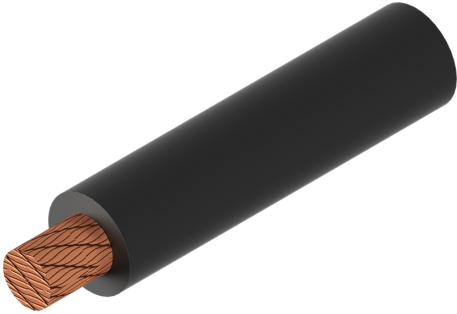


SILI-S 16



Item number 61.7614-*

Highly flexible stranded wire 16 mm² with reinforced insulation.

Technical data	
Rated Values	AC 1000 V, 100 A / DC 1500 V, 100 A
Standard color(s) *	21 22 23 33
Lead insulation	SIL
Temperature range	-50 °C ... +90 °C
Strand design (n x Ø mm)	4116 x 0,07
Lead weight	230.0 kg/km
Conductor diameter	6.1 mm
Cable diameter	10.5 mm
Insulation thickness	2.2 mm
Approvals	UR, CE, UKCA, EAC