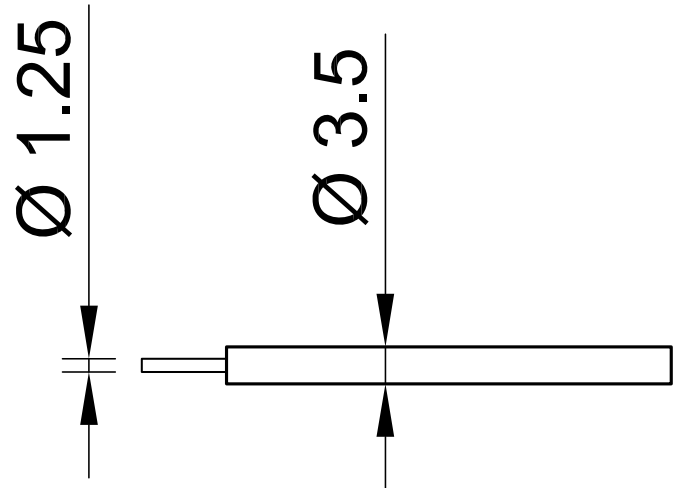


SILI-1V 0,75



Item number 61.7606-*

Super flexible stranded wire 0,75 mm² with reinforced insulation.

Technical data	
Rated Values	AC 1000 V, 15 A / DC 1500 V, 15 A
Standard color(s) *	20 21 22 23 24 25 27 29
Lead insulation	SIL
Temperature range	-50 °C ... +90 °C
Strand design (n x Ø mm)	385 x 0,05
Lead weight	17.0 kg/km
Conductor diameter	1.25 mm
Cable diameter	3.5 mm
Insulation thickness	1.1 mm
Approvals	UR, CE, UKCA, EAC