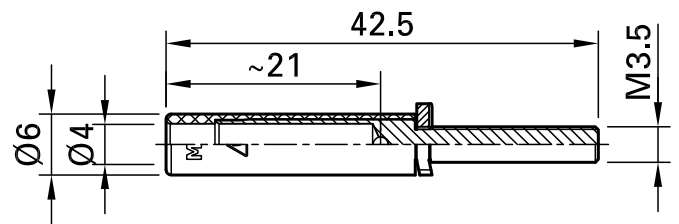
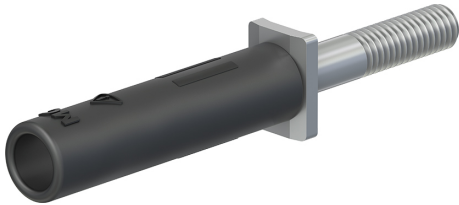


A-SLK4-RS



Item number 24.0168-*

Insulated, with M3.5 external thread for connecting to rail mounted terminals with M3.5 threaded holes. Machined brass. Ø 4 mm rigid socket in insulator accepting spring-loaded Ø 4 mm plugs with rigid insulating sleeve. Socket with internal slot for screwdriver.

Technical data	
Diameter of plug system	4 mm
Rated Values	1000 V, CAT II, 25 A
Surface treatment electrical contact	Ni
Base material electrical contact	CuZn
Standard color(s) *	21 22 23 24
Optional color(s)	25 26 29
Thread	M3,5
Test accessory acc. to	IEC EN 61010-031
User-Information	I 009