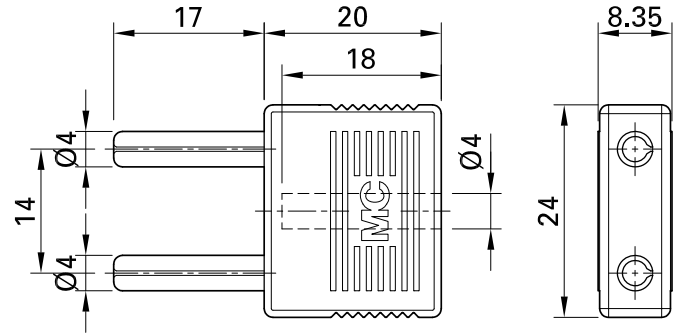
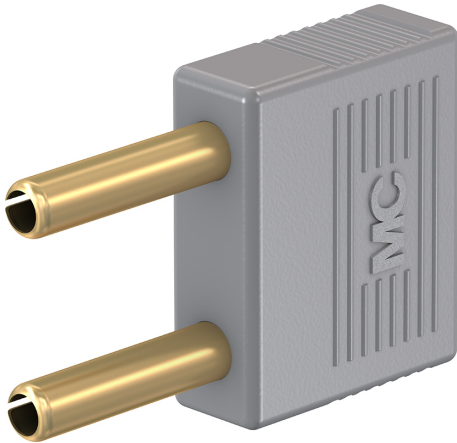


KS4-14



Item number 24.0004-*

Insulated \varnothing 4 mm. Hollow plug, made from a single piece of hard-drawn copper alloy. With \varnothing 4 mm rigid socket in insulator for tap connection at rear.

Technical data	
Diameter of plug system	4 mm
Rated Values	30 V, 24 A / 60 V, 24 A
Surface treatment electrical contact	Au
Base material electrical contact	CuBe
Standard color(s) *	28
Plug spacing	14 mm
Test accessory acc. to	IEC EN 61010-031
User-Information	I 097