

**MA213-08 (cn\_en)**  
**安装说明**

**CombiTac uniq**  
**10Gbit 模块**

**目录**

安全须知.....  
 安装.....  
 注意事项.....

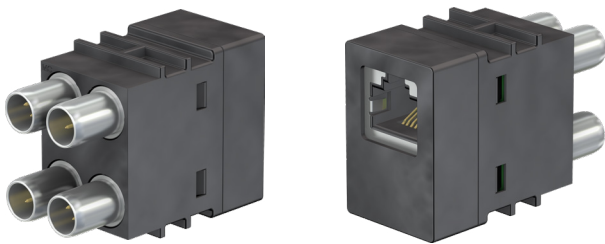
**MA213-08 (cn\_en)**  
**Assembly instructions**

**CombiTac uniq**  
**10Gbit module**

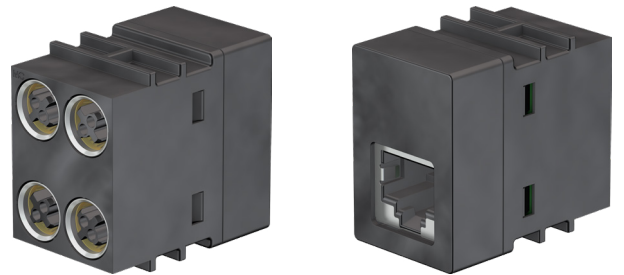
**Content**

2 *Safety Instructions*.....2  
 3 *Installation* .....3  
 4 *Notes* .....4

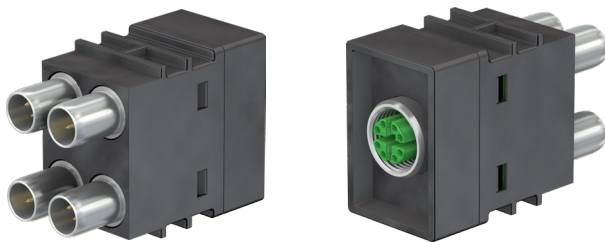
**CT-10GBIT-RJ45/S**



**CT-10GBIT-RJ45/B**



**CT-10GBIT-M12/S**



**CT-10GBIT-M12/B**









## 安全须知

产品只能由具备相应技能或受过相应培训的专业人员，依照适用安全法规进行装配或安装。如您未遵守上述警告，则 Stäubli Electrical Connectors (Stäubli) 不承担任何责任。

仅可使用 Stäubli 指定的组件和工具。自行装配时，切勿背离本手册所述的制备及装配说明，否则 Stäubli 无法保证产品安全性或产品性能达到官方技术参数。请勿以任何方式修改产品。

可与 Stäubli 元件插合的非 Stäubli 原厂制造的连接器的，在某些情况下，某些制造商甚至将其描述为“与 Stäubli 兼容”，但该连接器并不符合长期稳定安全的电连接要求，而且出于安全考虑，不得与 Stäubli 元件插合在一起。因此，Stäubli 对因此类连接器（即未经 Stäubli 批准）与 Stäubli 元件插合而造成的任何损失不承担任何责任。

-  此处所述作业不得在带电或负载部件上进行。
-  电击防护必须通过最终产品（即正确组装的插头连接器）及其用户来确保。
-  禁止在负载下断开连接。允许带电时进行插拔操作。
-  每次使用连接器前，需提前检查外部是否有磨损（尤其是绝缘层）。如有安全疑虑，必须咨询专业人员或更换连接器。
-  带外壳应用的连接器的防水功能可参考相关产品的IP保护等级。
-  未插合的连接器必须防潮防尘。被污染的公母连接器不应插合使用。







 欲了解更多技术参数，请参阅产品目录。


## Safety instructions

The products may be assembled and installed exclusively by suitably qualified and trained specialists duly observing all applicable safety regulations. Stäubli Electrical Connectors (Stäubli) does not accept any liability in the event of failure to observe these warnings.




Use only the components and tools specified by Stäubli. In case of self-assembly, do not deviate from the preparation and assembly instructions as stated herein, otherwise Stäubli cannot give any guarantee as to safety or conformity with the technical data. Do not modify the product in any way.

Connectors not originally manufactured by Stäubli which can be mated with Stäubli elements and in some cases are even described as “Stäubli-compatible” by certain manufacturers do not conform to the requirements for safe electrical connection with long-term stability, and for safety reasons must not be plugged together with Stäubli elements. Stäubli therefore does not accept any liability for any damages resulting from mating such connectors (i.e. lacking Stäubli approval) with Stäubli elements.




-  The work described here must not be carried out on live or load-carrying parts.
-  Protection from electric shock must be assured by the end product (i.e. by the correctly assembled plug connector) and by its user.
-  The plug connections must not be disconnected under load. Plugging and unplugging when live is permitted.
-  Each time the connector is used, it should previously be inspected for external defects (particularly in the insulation). If there are any doubts as to its safety, a specialist must be consulted or the connector must be replaced.
-  The plug connectors in the housing are protected from water in accordance with the IP protection class stated for the relevant product.
-  Unmated plug connectors must be protected from moisture and dirt. The male and female parts must not be plugged together when soiled.

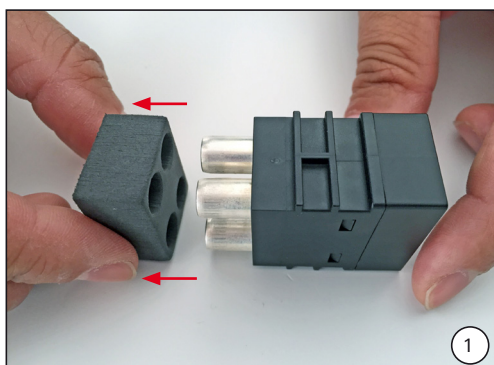
 For further technical data please see the product catalogue.

### 符号说明

-  危险电压警告
-  危险区域警告
-  产品使用说明或技巧

### Explanation of the symbols

-  Warning of dangerous voltages
-  Warning of a hazard area
-  Useful hint or tip

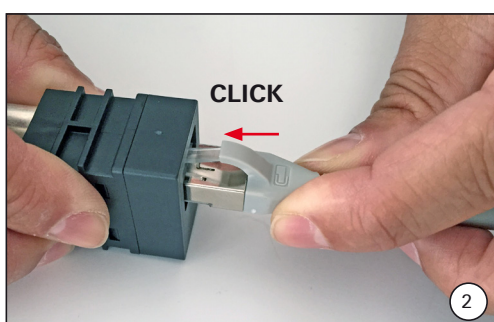


## 安装

(ill. 1)  
从插针一侧卸下载运输保护装置。

## Installation

(ill. 1)  
Remove transport protection from the pin side.

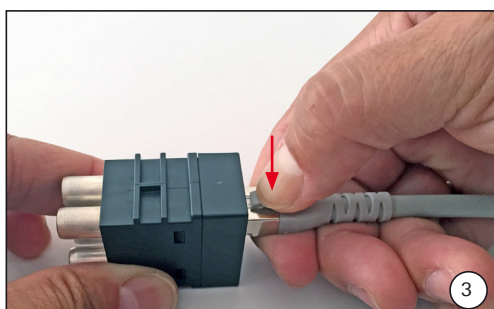


## 版本 RJ45

(ill. 2)  
将 RJ45 连接器插入 RJ45 插座, 并且安装到位。

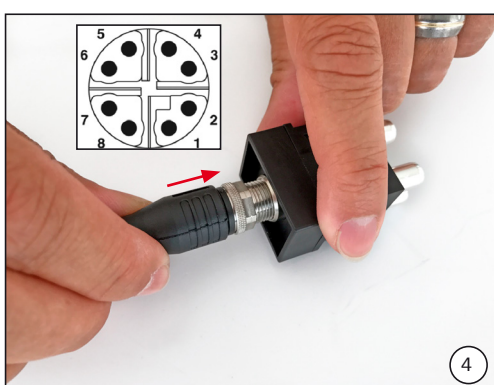
## Version RJ45

(ill. 2)  
Insert RJ45 connector into RJ45 socket, and click into position.



(ill. 3)  
要卸下 RJ45 连接器, 请按压紧固夹松开 RJ45 连接器, 然后拔出。

(ill. 3)  
To remove the RJ45 connector, press the holding clip to release the RJ45 connector, and pull out.



## 版本 M12

(ill. 4)  
将 M12 (x-编码) 连接器连接至模块, 然后旋转 M12 连接器螺母以锁定。

## Version M12

(ill. 4)  
Connect the M12 (x-coded) connector to the module and turn the M12 connector screw to lock.

⚠ 注意  
M12 连接器的拧紧扭矩为 1 Nm。

⚠ Attention  
M12 connector tightening torque is 1 Nm.

⚠ 注意  
请注意编码。

⚠ Attention  
Please notice the coding.

要卸下 M12 连接器, 请转动 M12 连接器螺母解锁并拔出。

To remove the M12 connector turn the M12 connector screw to unlock and pull out.

注意事项 / Notes:

---

**生产商/Producer:**  
**Stäubli Electrical Connectors AG**  
Stockbrunnenrain 8  
4123 Allschwil/Switzerland  
Tel. +41 61 306 55 55  
Fax +41 61 306 55 56  
mail ec.ch@staubli.com  
www.staubli.com/electrical