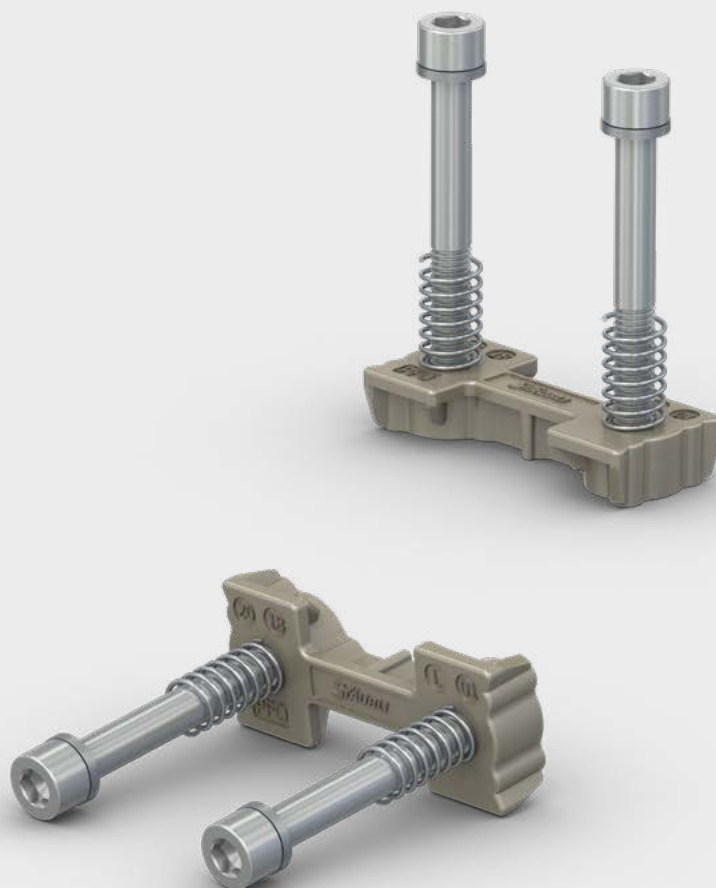


# Positioning and Fixing Option for MPC

**Railway | Industrial Connectors**

EN



# PFO – Positioning and Fixing Option

## Easy integration of pluggable connectors

Connections along the traction chain are often hard to implement because space and accessibility are very limited, or because the cables are too short. The higher tensile force on the connector is another issue.

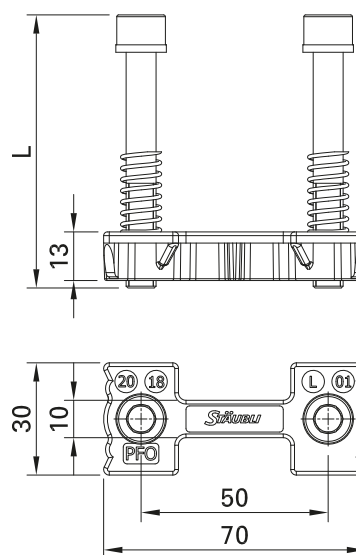
Example applications include: Traction motor connection under the car in the bogie area, narrow inter-car connections, etc.

To make plugging and locking easier, Stäubli Electrical Connectors created the Positioning and Fixing Option (PFO).

Thanks to PFO, the user can easily position the mobile part of the connection, hitch it on, push it, lock it to the socket side, and secure it to the train chassis.

This decreases the role played by the plug and cable weight and by the tensile force of

the cables on the connector. Blind mating is also possible.



Order No.	Type	Description	Length (L)
19.2648	PFO1	2-piece set, suitable for size 1 MPC connectors	73 mm
19.2649	PFO2	2-piece set, suitable for size 2 MPC connectors	83 mm



Assembly instructions MA414

[www.staubli.com/electrical](http://www.staubli.com/electrical)

Easy to position, connect, and lock thanks to PFO



**Technical data**

Salt spray test – IEC62847	240 h
Vibrations and shocks – EN 61373	Category 2 – bogie mounted
Drilling plan	See MA414 or product drawing
Wall thickness of customer plate	2 mm – 5 mm
Torque of the fixing screws	12 N m – 13 N m
Length PFO1	73 mm
PFO2	83 mm



● Staubli Units    ○ Representatives/Agents

# Global presence of the Staubli Group

[www.staubli.com](http://www.staubli.com)